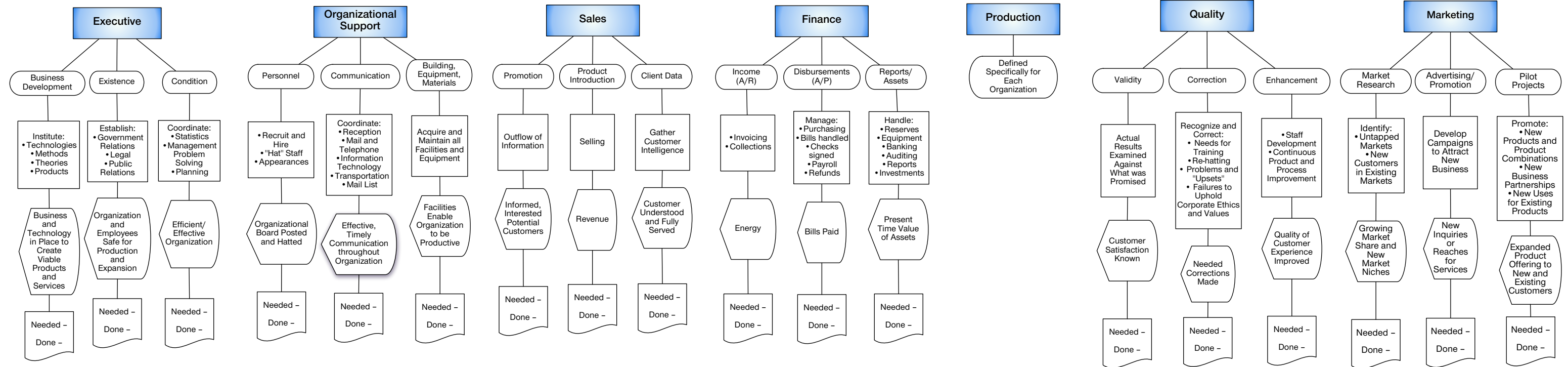


# Sample Organizational Structure

Below are listed a generic set of organizational functions and sub-functions required for a medium to large organization to prosper. Absence or non-performance of any function will mean continued reliance on top management to solve problems associated with those functions and/or threaten the future survival of the organization in the marketplace.



**Key:**

Function

Sub-Function

• Activities of Sub-Function

Final Product

**Assessment of Function/ Sub-Function**

**Needed** = Assessment of the need for this function at this time in the organization's history

**Done** = Assessment of whether someone is currently held responsible for this function and that the responsibility is being met

